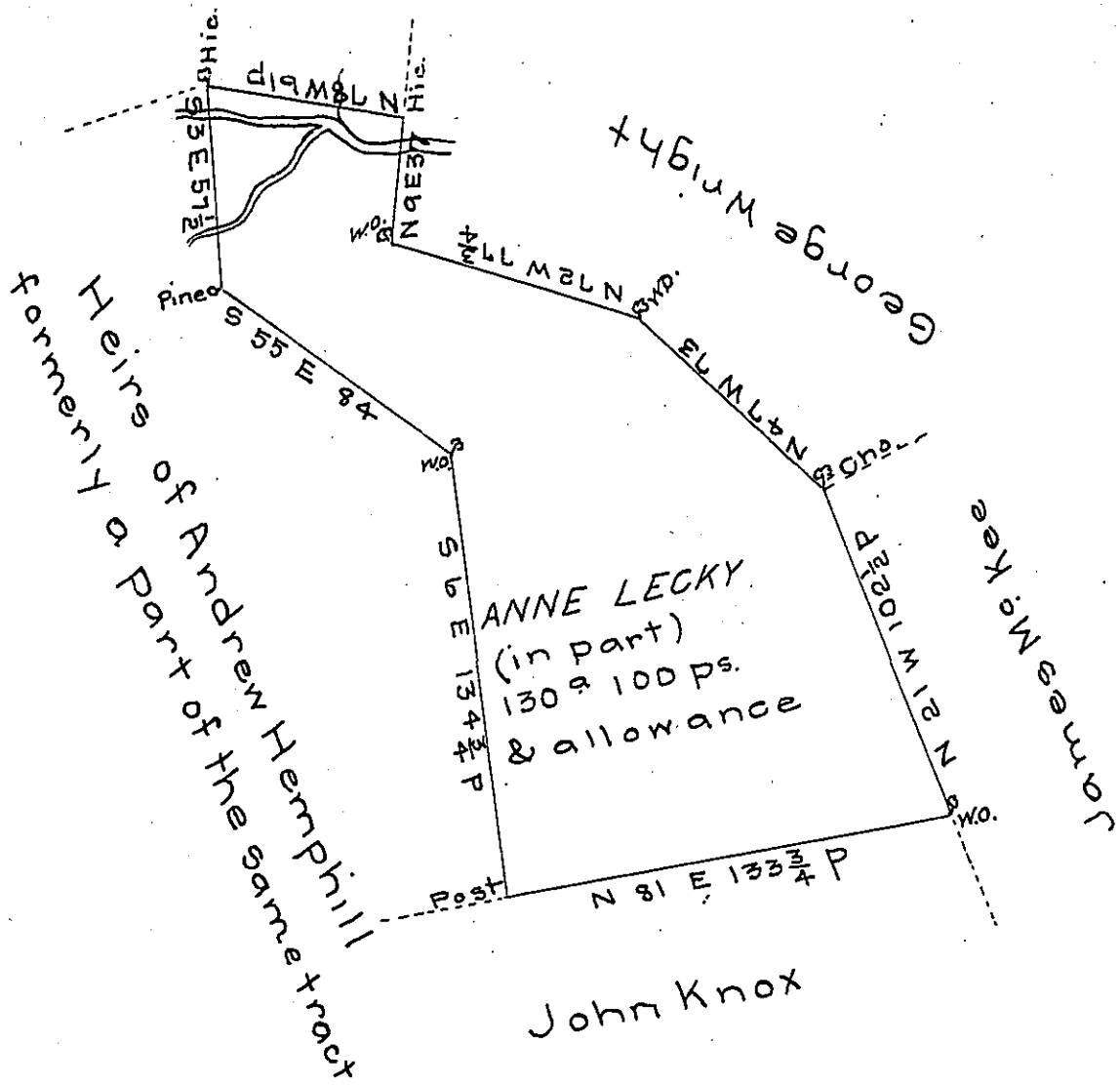


See - C 124-166

Samuel Witherson



A draft of a tract of land situate in Lurgan Township in the County of Franklin (formerly in the County of Cumberland) containing one hundred and thirty acres 100 perches and the allowance of six p cent for roads &c. being a part of a tract of land formerly surveyed in pursuance of a warrant granted to Anne Lecky bearing date the 21st day of September 1748 - Resurvey'd and laid off from the other part of said tract the 23^d day of December 1790.

To Daniel Brodhead Esquire }
 Surveyor General of Pennsylvania } Matt^w Henderson

D.S.

IN TESTIMONY that the above is a copy of the original remaining on file in the Department of Internal Affairs of Pennsylvania, made conformably to an Act of Assembly approved the 16th day of February, 1833, I have hereunto set my Hand and caused the Seal of said Department to be affixed at Harrisburg, this sixteenth day of September 1905

Goac P Brown
 Secretary of Internal Affairs.